



# High Precision PC (Polycarbonate) Chocolate 2D / 3D PC Moulds With Smoothly Surface

## Specifications :

Payment Terms	L/C T/T Western Union
keyword	Chocolate moulds, chocolate forming moulds, chocolate PC moulds, 3D chocolate moulds, hollow chocolate moulds, silicon chocolate moulds, silicon moulds, Chocolate depositing line, One shot chocolate machine, one shot chocolate production line

## Detail Introduction :

### Chocolate 2d / 3d pc moulds

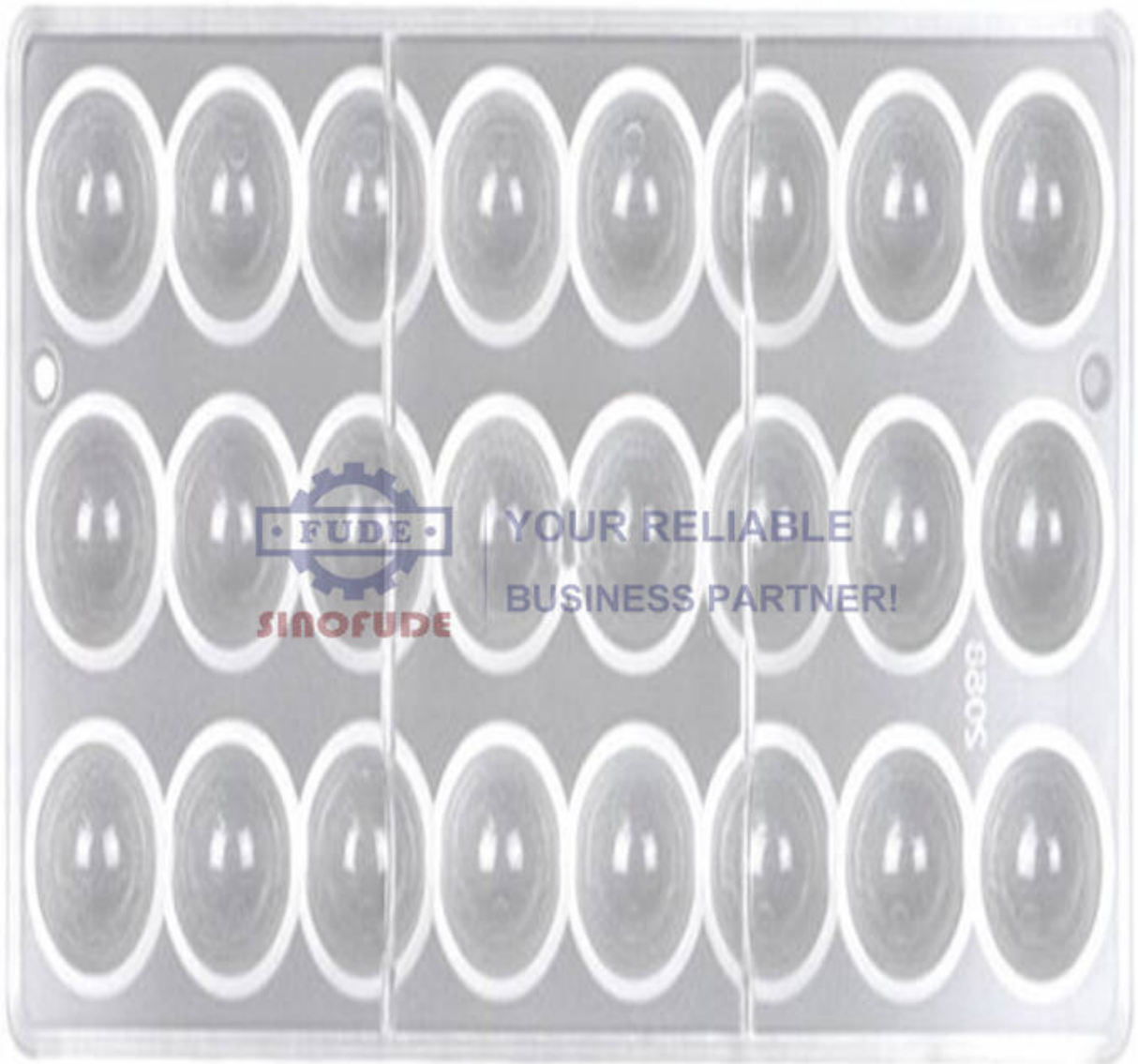
SINOFUDE Provide the supper quality chocolate moulds, we use all brand new PC (Polycarbonate) materials to make the moulds, No wastage and 2nd hand raw materials to make sure the moulds is highly transparent and smoothly surface.

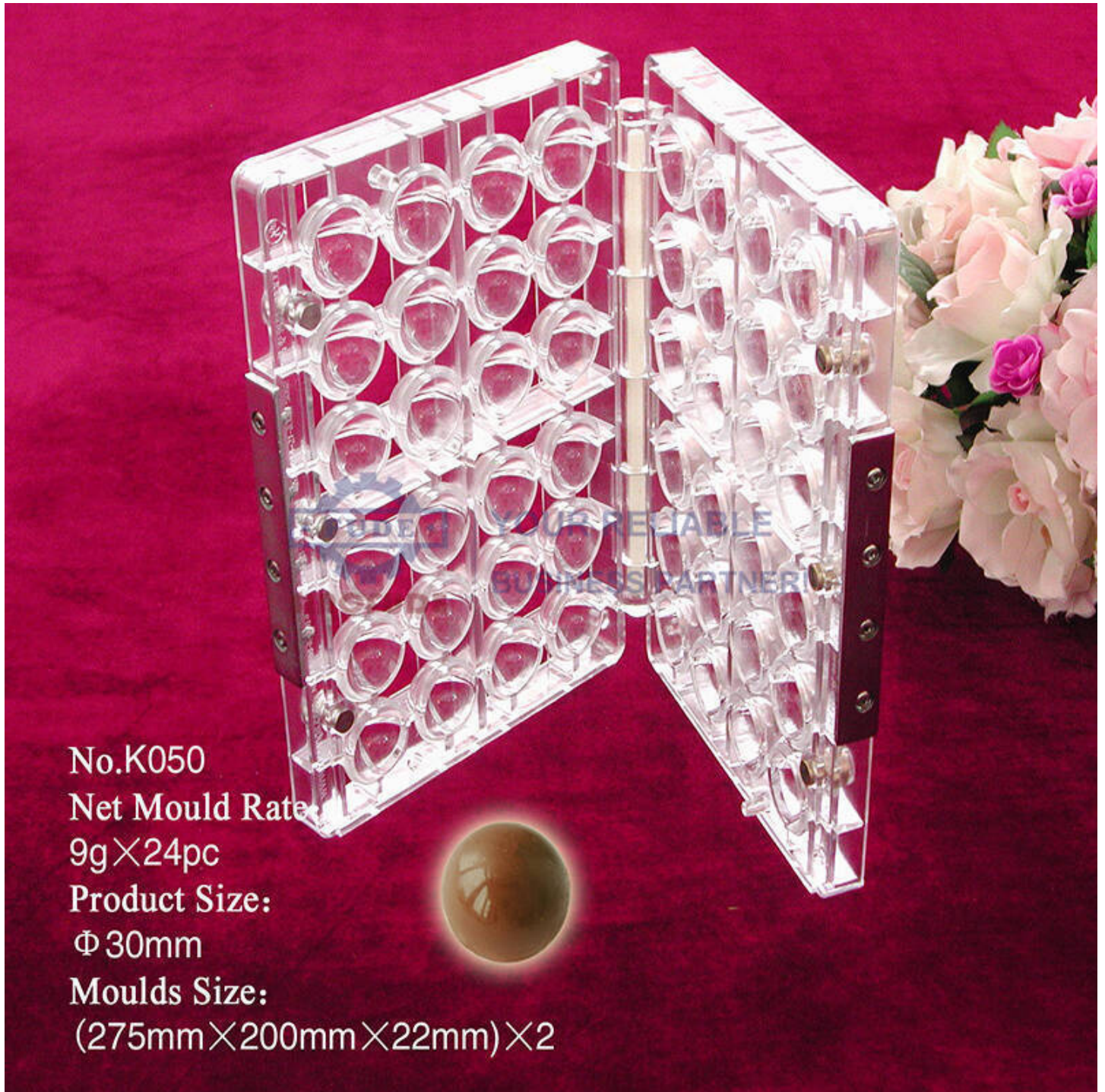
3D or 2D moulds are available for us to provide on time and quality assured.



YOUR RELIABLE  
BUSINESS PARTNER!

[info@sinofude.com](mailto:info@sinofude.com)





**Chocolate Moulds Order Steps:**

1. Chocolate sample or drawing provided by customer.
2. 3D design or Sample cavity provided by us for confirmation before mould making.
3. Moulds fabrication and packing for delivery.



FUDE MACHINERY

[Http://www.sinofude.com](http://www.sinofude.com)

E-mail:info@sinofude.com

07



275x175(mm) 5g  
4x8(pc.)  $\Phi 32 \times 5$ (mm)

275x175(mm) 60g  
2x2(pc.) 128x64x7(mm)

275x175(mm) 5g  
4x6(pc.)

FCM081

FCM082

FCM083



275x175(mm)  
4x6(pc.)  
7.7g  
43x19.6x9(mm)

275x175(mm) 22g  
4x2(pc.) 76.5x44x6.5(mm)

275x175(mm)  
2x6(pc.)  
15g  
56.5x40x10.8(mm)

275x175(mm)  
2x6(pc.)  
19g  
57.5x44.5x10(mm)

FCM084

FCM085

FCM086

FCM087



275x175(mm)  
4x8(pc.)  
6g  
34x19.5x9(mm)

275x175(mm)  
4x6(pc.)  
5.2g  
 $\Phi 22.3 \times 20.3$ (mm)

275x175(mm)  
4x8(pc.)  
4g  
31.4x25.5x10(mm)

275x175(mm) 13g  
2x8(pc.) 27x19x10(mm)

SWEET TIME

FCM088

FCM089

FCM090

FCM091

[Http://www.sinofude.com](http://www.sinofude.com)

E-mail:info@sinofude.com

Tel:86-021-57416165



FUDE MACHINERY

[Http://www.sinofude.com](http://www.sinofude.com)

E-mail:info@sinofude.com

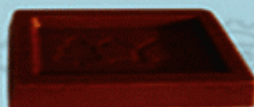
04

300x225(mm) 6g  
4x8(pc.) 48x20x7(mm)



FCM038

300x225(mm)  
4x8(pc.)  
6g  
37x27.5x6(mm)



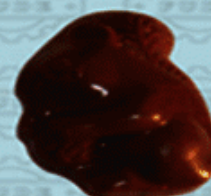
FCM039

300x225(mm)  
8x8(pc.)  
3g  
23.4x17x10(mm)



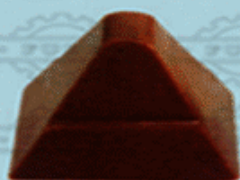
FCM040

300x225(mm)  
4x8(pc.)  
4g  
34x23x9(mm)



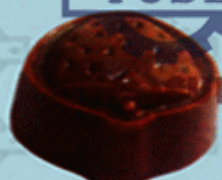
FCM041

300x225(mm)  
4x8(pc.)  
8.5g  
29.3x23x25(mm)



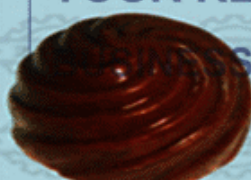
FCM042

300x225(mm)  
4x8(pc.)  
10.5g  
33.9x25x16.2(mm)



FCM043

300x225(mm)  
4x8(pc.)  
12.5g  
Φ31.5x19(mm)



FCM044

300x225(mm)  
4x8(pc.)  
10g  
27.6x22.5x18.3(mm)



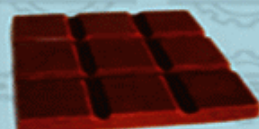
FCM045

300x225(mm)  
4x8(pc.)  
8.5g  
28x20.7x17(mm)



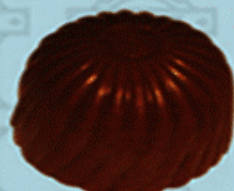
FCM046

300x225(mm)  
4x2(pc.)  
22g  
57.5x57.5x5.5(mm)



FCM047

300x225(mm)  
4x8(pc.)  
12g  
Φ20(mm)



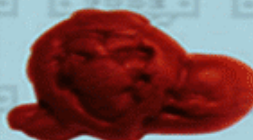
FCM048

300x225(mm)  
4x8(pc.)  
5.5g  
76x38x4.2(mm)



FCM049

300x225(mm)  
4x8(pc.)  
4g  
31x30x9.5(mm)



FCM050

300x225(mm)  
6(pc.)  
40g  
80x84x8(mm)



FCM051

[Http://www.sinofude.com](http://www.sinofude.com)

E-mail:info@sinofude.com

Tel:86-021-57416165



No.K-020  
Net Mould Rate:  
35g×4pc  
Product Size:  
90mm×56mm×54mm  
Moulds Size:  
(275mm×200mm×31mm)×2pcs.